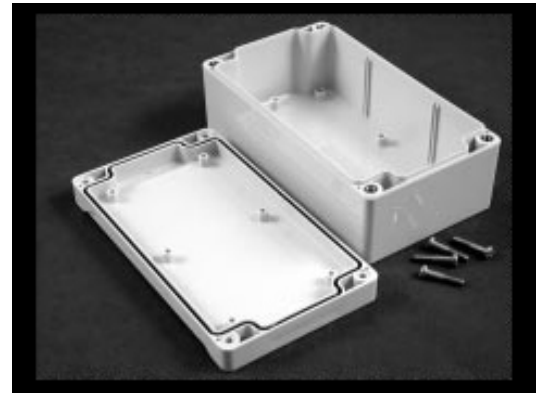


Watertight Styled Lid

P
L
A
S
T
I
C



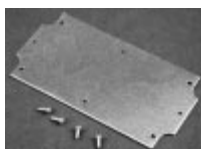
KEY FEATURES

- Electronic instrument enclosures, designed for mounting printed circuit boards or DIN rail mounted components.
- “Styled” lid version has three main advantages over our flat lid (CEM AE series)
 - Smooth recessed surface on lid for a membrane keypad or label
 - Standoffs molded in the interior of the lid (except for the CEM AES – 656540) - designed for #6 self tapping screws
 - More modern “styled” look vs. our traditional flat lid (CEM AE series)
- Molded in general purpose ABS plastic or polycarbonate material.
- The general purpose ABS plastic carries a UL flammability rating of UL94HB. Not recommended for outdoor use.
- The polycarbonate material carries a UL flammability rating of UL94 5V and is suitable for outdoor use.
- Colour is light grey (RAL 7035).
- Gasketed lid with two-piece “tongue & groove” construction provides protection against access of oil, dust and water.
- Designed to meet IP66 & NEMA 4, 4X, 12 & 13 ratings.
- Gasket is factory poured using high temperature U.L. listed - silicone rubber gasket material.
- Lid is secured with self-captivating M4 stainless steel machine screws (included), threaded into integral stainless steel bushings (for repetitive assembly & disassembly).
- All stainless steel hardware to avoid corrosion caused by dissimilar metals.
- Lid and mounting holes are located outside of the gasket seal.
- Heavy duty 16 gauge galvanized steel panels available (see chart).
- Internal features are maximized for mounting options:
 - Internal DIN rail mounting tabs molded in all except the CEM AES – 126540
 - Threaded (M3) integral brass inserts & standoffs designed for M3.5 or #6 self tapping screws for P.C. board or inner panel mounting in all but the smallest size (CEM AES – 656540)
 - Vertical P.C. card guides (for 1.5 mm thick P.C. boards) are molded in all but the smallest size (CEM AES – 656540)

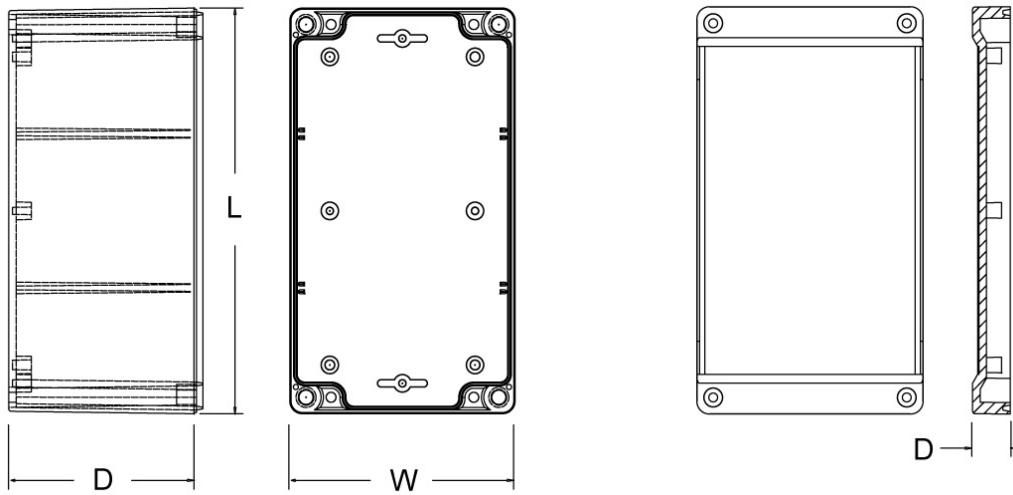
ACCESSORIES

Panel

Heavy-duty panel for mounting components. Galvanized 16 ga. steel. Includes mounting hardware.
See table (next page) for part numbers



CEM AES (ABS Plastic enclosures)



Body View

Lid View

REFERENCE		DIMENSIONS (in millimetres)					Optional Inner Panel Part Number	Dimensions	
ABS	Polycarbonate	Length (L)	Width (W)	Overall Depth (D)				Length	Width
				Assembled	Box	Lid			
CEM AES – 656540	CEM AES2 – 656540	65	65	40	25	15	CEMAE BPL	56	59
CEM AES – 909060	CEM AES2 – 909060	90	90	60	45	15	CEMAE EPL	79	79
CEM AES – 126540	CEM AES2 – 126540	120	65	40	25	15	CEMAE CPL	112	53
CEM AES – 126560	CEM AES2 – 126560	120	65	60	45	15	CEMAE CPL	112	53
CEM AES – 129060	CEM AES2 – 129060	120	90	60	45	15	CEMAE FPL	109	79
CEM AES – 129080	CEM AES2 – 129080	120	90	80	65	15	CEMAE FPL	109	79
CEM AES – 121260	CEM AES2 – 121260	120	120	60	45	15	CEMAE NPL	108	107
CEM AES – 121280	CEM AES2 – 121280	120	120	80	65	15	CEMAE NPL	108	107
CEM AES – 169060	CEM AES2 – 169060	160	90	60	45	15	CEMAE JPL	147	76
CEM AES – 169090	CEM AES2 – 169090	160	90	90	75	15	CEMAE JPL	147	76
CEM AES – 161660	CEM AES2 – 161660	160	160	60	45	15	CEMAE RPL	151	147
CEM AES – 161690	CEM AES2 – 161690	160	160	90	75	15	CEMAE RPL	151	147
CEM AES – 181260	CEM AES2 – 181260	180	120	60	45	15	CEMAE HPL	168	107
CEM AES – 181290	CEM AES2 – 181290	180	120	90	75	15	CEMAE HPL	168	107
CEM AES – 201290	CEM AES2 – 201290	200	120	90	75	15	CEMAE UPL	193	107
CEM AES – 241690	CEM AES2 – 241690	240	160	90	75	15	CEMAE VPL	231	145